

Carolina Cost and Quality Initiative UNC Cecil G. Sheps Center

Overview of UNC Cecil G. Sheps Center:

The Cecil G. Sheps Center for Health Services Research ("Sheps Center") is a unit of the University of North Carolina Division of Health Affairs. The Center's director reports to the Vice Chancellor for Research. Oversight responsibility of the Center is vested in an Advisory Board whose members include senior UNC faculty and administrators from the five health science schools, departments from the Division of Academic Affairs, as well as representatives of the health services community at large. The director receives assistance in planning and leading the Center's activities from five deputy directors, and from research program directors responsible for specific substantive areas of research.

Carolina Cost and Quality Initiative

The Carolina Cost and Quality Initiative is a collaborative partnership between UNC's Gillings School of Global Public Health and the Cecil G. Sheps Center for Health Services Research. Its mission is to promote population-based research on the incidence and prevalence of disease in insured populations, patterns of utilization and treatment, and cost of care in North Carolina in order to improve the delivery and quality of care for its residents.

The Initiative currently maintains claims data from North Carolina Medicaid and Blue Cross Blue Shield of North Carolina (BCBSNC).

Data owner

CCQI has established data-sharing agreements with various data owners. These agreements with public and private partners allow CCQI to make claims and membership data available to UNC researchers by request. These data are owned by the various partners and are available through CCQI due to a mutually collaborative partnership between the data owner and CCQI and its network of researchers. CCQI currently maintains claims data from North Carolina Division of Medical Assistance (DMA) Medicaid and Blue Cross Blue Shield of North Carolina (BCBSNC).

Data description and collection criteria

Medicaid data:

NC Medicaid data are from the North Carolina Department of Health and Human Services Division of Health Benefits (DHB) and includes claims information (including doctor visits, inpatient and outpatient care, prescription medications, dental treatments, charge amounts, dates of service, and diagnoses and procedures), provider information (including specialty and location), member information (including date of birth, gender, county/ZIP code of residence, race and ethnicity).

BCBSNC data:

The BCBSNC database contains claims data on health care services reimbursed by BCBSNC. The database includes claim records from insured groups, administrative services only (ASO) groups, and individual market and Affordable Care Act Exchange Plans. The data includes claims information (including doctor visits, inpatient and outpatient care, prescription medications, dental treatments, charge amounts, dates of service, and diagnoses and procedures), provider

Governor's Highway Safety Program
Data Documentation Project

information (including specialty and location) and member information (including date of birth, gender, county/ZIP code of residence).

Type of data: source data or compiled/abstracted data

Source data

Are the data available to outside parties for analytical purposes?

The data are only available to UNC researchers on projects approved by the associated oversight committee.

Process to obtain the data for research

Only University of North Carolina at Chapel Hill faculty, staff, and graduate students are permitted to access data maintained by the Carolina Cost and Quality Initiative. Project proposals must be submitted to a review committee for approval in order to assure the feasibility of the proposed research. For the most up to date instructions, forms and contact information, see this page: <http://www.shepscenter.unc.edu/data/bcbsnc-claims-data-ccqi/data-access-guidelines/requests-analytic-data/>

Website

<https://www.shepscenter.unc.edu/data/bcbsnc-claims-data-ccqi/>

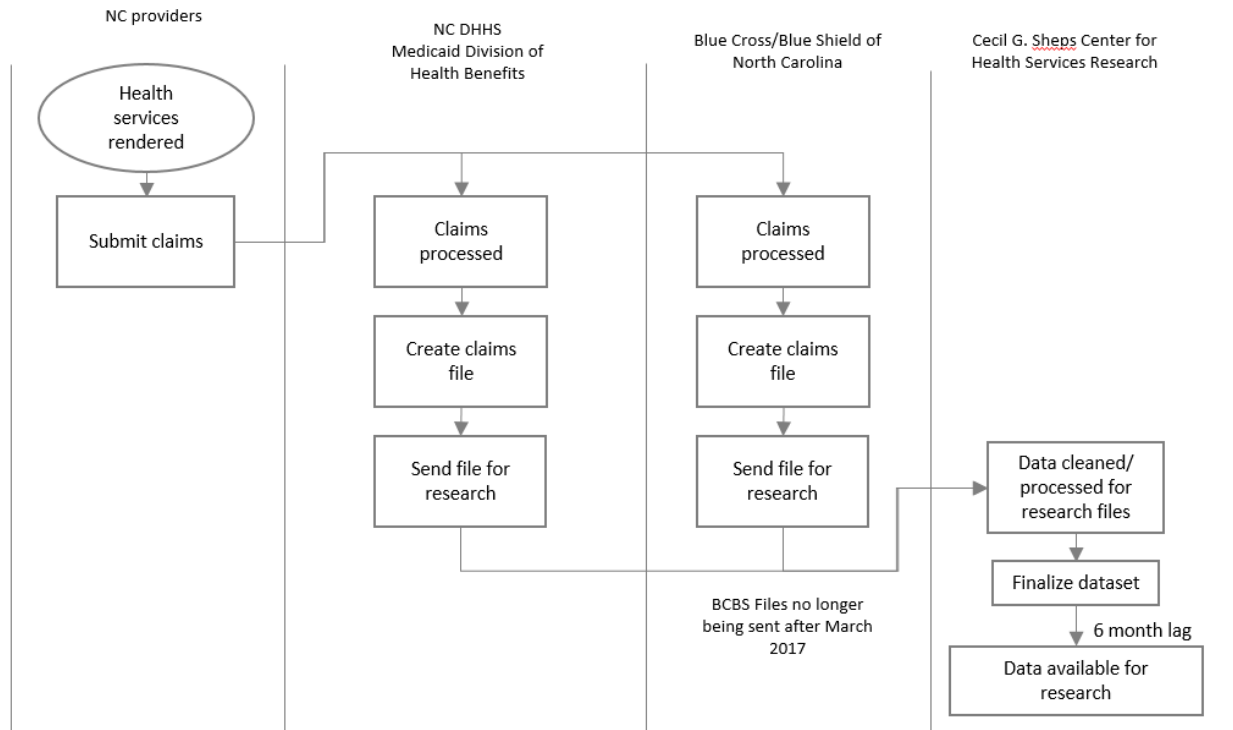
Contact(s)

Roger Akers, MS
Deputy Director for Data Mgt and Information
Technology
Cecil G. Sheps Center for Health Services
Research
University of North Carolina at Chapel Hill
919-966-7188
akers@unc.edu

Abigail Haydon, MPH, PhD
Research Program Manager
NC TraCS Institute
University of North Carolina at Chapel Hill
919-966-6879
ahaydon@email.unc.edu

Governor's Highway Safety Program
Data Documentation Project

Data Flowchart



Who enters the original data (Highway patrol officers, Healthcare providers, etc.)?

Healthcare providers, billing coders

Injury classification: Injury classification method (ICD-10-CM, etc.)

Diagnosis codes (ICD-9-CM and ICD-10-CM) and procedure codes (CPT)

Collection timeframe: when the data were entered after original event

Medicaid: Claims must be submitted within 365 days of the first date of service, except for inpatient claims and nursing facility claims, which must be received within 365 days of the last date of service.

Years available: Description of timespan for which data are available

NC Medicaid: January 2011 – September 2018

BCBSNC: January 2006 – September 2018

Data History: Key changes in the data that would affect research use

- Medicaid Capitation Management claims data became available starting in 2018.

Are data dictionaries available?

Yes

Dictionaries

Dictionaries are available online: <http://www.shepscenter.unc.edu/data/bcbsnc-claims-data-ccqi/data-dictionaries/>

Governor's Highway Safety Program
Data Documentation Project

Files used to create data dictionaries

Medicaid:

1. Medicaid_codebook_Claims_201809.xls
2. Medicaid.Data_.codebook.Member.9.18.2017.xls
3. Medicaid_codebook_Claims_201709_Summary-1.pdf

BCBSNC:

1. CLAIMS_USER_CB_V1_Dental.pdf
2. CLAIMS_USER_CB_V1_Facility.pdf
3. CLAIMS_USER_CB_V1_Pharm.pdf
4. CLAIMS_USER_CB_V1_Prof(1).pdf
5. MEMBER_USER_CB_V1.pdf
6. PROVIDER_USER_CB_V1.pdf

Field Mapping from Source Documentation

Source documentation field map

Report labels	Source labels (where available)
Table or category	Provider (BCBSNC only), Member or Claims
Field	Variable Label
Field-Literal	Variable Name
Description	Valid Values + type of dataset (Facility, Professional, Pharmacy or Dental)
Source comments	
Format	Variable Type
Length	Variable Length
Required (Y/N)	
Sensitive (Y/N)	
Unique key (Y/N)	
Retired Field (Y/N)	
Retired Date	

Additional fields available in source documentation

Variable Number

Quality and Performance Measures

Known data quality issues

None