

New Modes, New Codes!

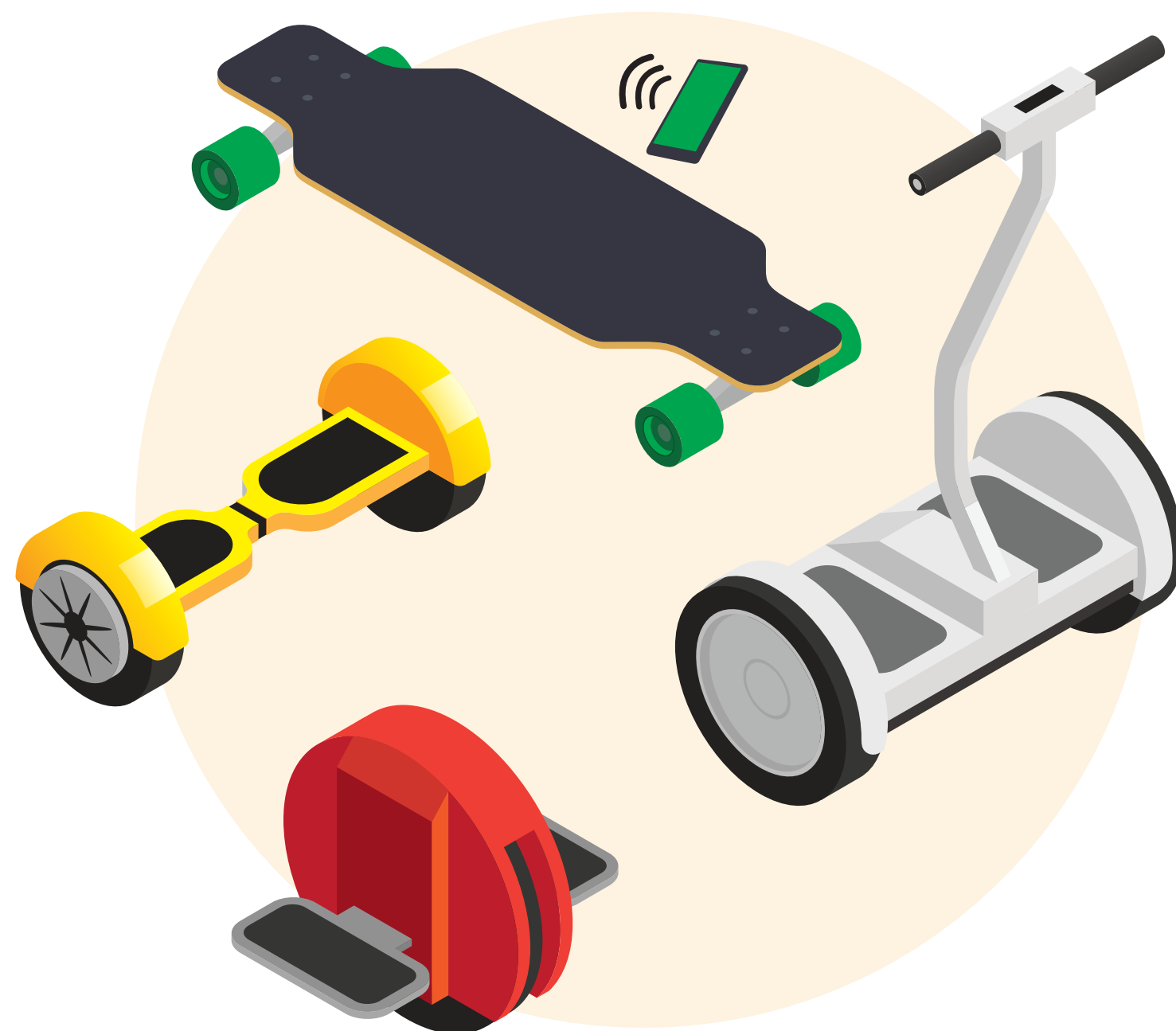
Categorizing injuries related to emerging micromobility transportation.



e-Scooters

Keyword for Chief Complaint:
e-scooter + Brand

(Bird, Gotcha, Jump, Lime, Spin, Razor, etc.)



Other Devices

Keywords for Chief Complaint:
e-skateboard, e-hoverboard,
Segway®, e-unicycle

ICD-10-CM Codes

V00.09 Pedestrian on foot injured in collision with other pedestrian conveyance

V00.181, V00.182, V00.188 Accident on other rolling type pedestrian conveyance

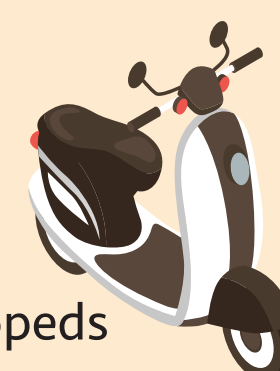
V01-V06 (.09, .19, .99) Pedestrian with other conveyance injured in transportation collision

NOT considered e-scooters

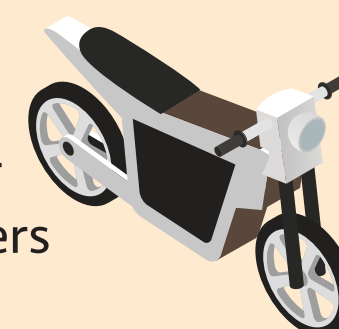
These devices are not considered e-scooters and have their own set of ICD-10-CM codes.



mobility
scooters



mopeds



motor
scooters

