

EMS Response to Motor Vehicle Crashes in North Carolina

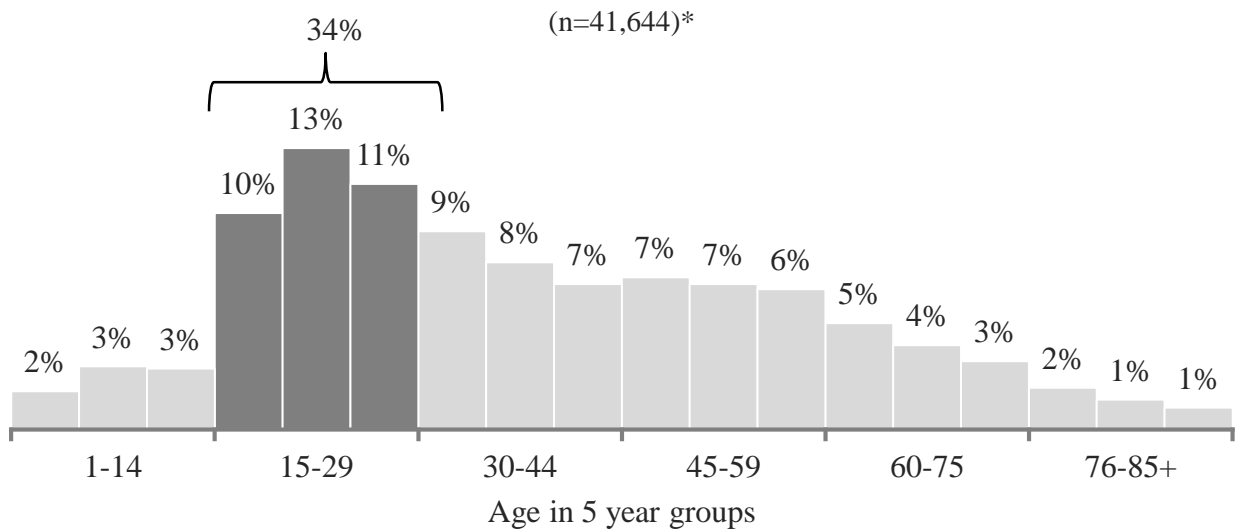
Based on 2018 North Carolina NEMSIS version 3.3.4 data from ESO Solutions for 911-call initiated EMS responses with a mechanism of injury between V00.0 to V79.9, n=41,827

All percentages have been rounded to the nearest integer value, so percentage totals may not sum to 100%



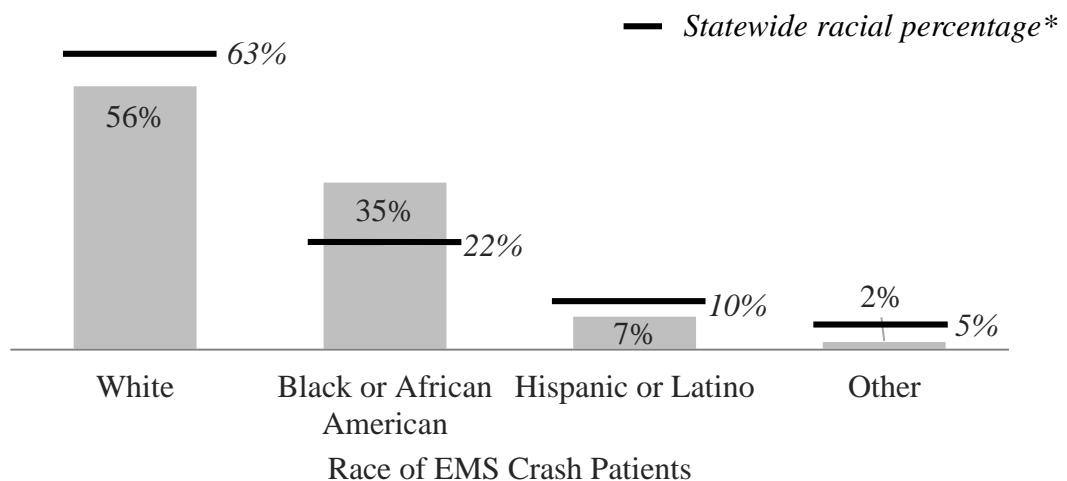
Emergency Medical Services (EMS) are often the first line of care for those injured in motor vehicle crashes. A review of 2018 data provides insights regarding crash victims and EMS response.

15-29 Most Common Age Group of Motor Vehicle Crash Victims Seen by EMS



*Age was missing for 183 EMS patients.

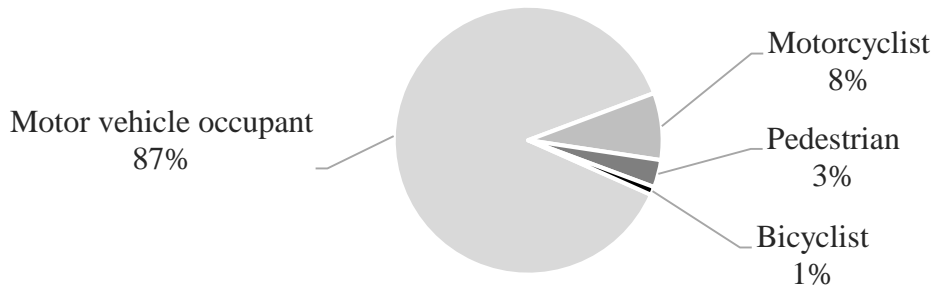
Black North Carolinians Comprise only 22% of the NC Population, but 35% of EMS Crash Patients* (n=41,021)**



*Source: <https://www.census.gov/quickfacts/nc>

** Race was missing for 806 EMS patients.

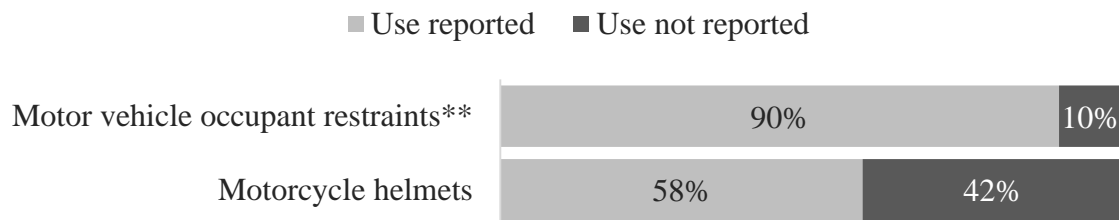
8% of EMS Crash Patients are Motorcyclists, although Motorcycles Comprise Only 2% of Registered Vehicles in North Carolina* (n=38,432)**



*Source: Table MV-1 - Highway Statistics 2017 - Policy | Federal Highway Administration. (n.d.). Retrieved August 29, 2019, from <https://www.fhwa.dot.gov/policyinformation/statistics/2017/mv1.cfm>

**Excludes 128 person in all other categories and 3,267 persons with no designated category

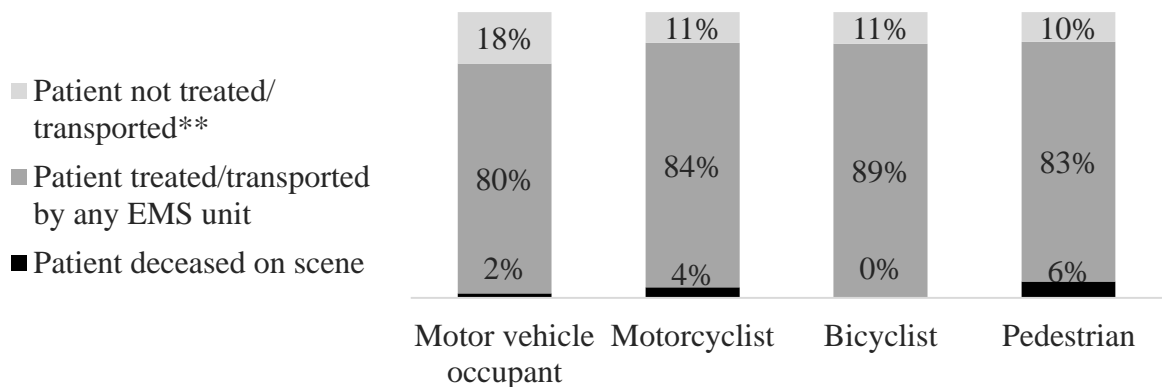
EMS Reported Motor Vehicle Occupant Restraint Use More Often than They Reported Motorcycle Helmet Use at Crash Scenes (n=34,199*)



*2,583 (7%) were missing any indication of safety equipment use.

**Motor vehicle restraints include seatbelts, car seats and booster seats

Of All Crash Victim Types, Pedestrians Most Likely to be Either Deceased at the Scene or Receive EMS Treatment/Transport (n=38,432)*



*Excludes 128 person in all other categories and 3,267 persons with no designated category

**includes patients who did not require treatment and patients who refused treatment

Project Information

Funding for this project, “Linking Crash Reports to Medical Data in North Carolina: A Strategic Implementation Plan” was provided by the NC Governors Highway Safety Program. For more information, please see additional reports at the following link. <http://cchi.web.unc.edu/transportation-health-data/>